

Goose - duck - poultry - rabbit



Goose



OC001 - kg. 4
Roast snow goose



OC013 - kg. 3,5
Semi-boneless Toulouse Goose
("paletot" cut)



OC002 - g. 300
Goose breast ("magret" cut)



OC003 - g. 350 - 400
Confit goose leg



OC005 - g. 700
Goose foie gras - extra quality
grade



OC006 - g. 600
Goose foie gras - first quality



OC010 - g. 700
Refined melted goose fat

Duck



AN001 - kg. 2,2
Female Duck



AN012 - kg. 1,3
Bonesless Duck



AN014 - kg. 1,7
Whole Barbary duck



AN002 - kg. 3,3 - 4
Drake



AN004 - g. 450
Drake breast



AN003 - g. 200 - 250
Duck breast



AN018 - g. 200
Barbary duck breast



AN005 - g. 350
Mulard duck breast



AN006 - g. 300 - 350
Drake leg



AN008 - g. 450 - 500
Mulard foie gras - extra quality grade



AN009 - g. 500
Mulard foie gras - first quality grade



AN007 - g. 30
Duck's raw liver pieces



ZCAN020 - g. 800 - 1000
Duck meat (to keep at -18°C)

"ROUGIÉ"
flash-frozen goose
and duck foie gras



ZCAN027 - kg. 3
Cleaned duck foie gras



ZCAN033 - g. 450 - 600
Whole duck foie gras



ZCOC022 - kg. 3
Cleaned goose foie gras



ZCOC024 - g. 600 - 900
Whole goose foie gras



ZCAN029 - ml. 750
Duck foie gras ice cream



ZCAN031 - kg. 1,4
Mini-escalope of duck foie gras



ZCAN025 - kg. 2
Duck foie gras nuggets



ZCAN022 - kg. 1,9
Duck foie gras escalope



ZCAN035 - g. 60 - 80
Duck foie gras escalope - Prestige



ZCOC020 - kg. 1,4
Goose foie gras escalope

Poultry



PL217 - kg. 3
Chicken



PL222 - kg. 1,4
Whole pullet



PL215 - g. 500
Whole cockerel



PL225 - g. 700
Boned cockerel



PL227 - g. 350
Cockerel breast with wing



PL224 - kg. 2,5
Whole farmyard chicken



PL221 - kg. 2,5
Capon



PL251 - kg. 1,5
Boneless capon



PL235 - kg. 3
Traditional Capon of Morozzo
(available in December)



PL341 - kg. 5
Whole Turkey-hen



PL342 - kg. 4
Boneless Turkey-hen



PL223 - kg. 2,2
Bresse Chicken PDO



PL230 - kg. 4
Bresse Capon PDO (available
upon reservation from 15th to 31st
December)



PL231 - kg. 3,5
Bresse Turkey PDO (available
upon reservation from 15th to 31st
December)



ZCPL226 - g. 900
Cockrels' crests (to be preserved at
-18°C)

Pigeon



PL007 - g. 500
Hand-plucked pigeon gr.500



PL008 - g. 400
Hand-plucked pigeon gr.400



PL035 - g. 250
Boneless pigeon

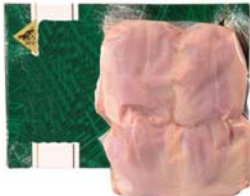


PL036 - g. 100 - 125
Pigeon breast

Quail



PL144 - g. 220
Giant Quail



PL108 - g. 130
Giant Quail boneless



PL137 - g. 50 - 60
Quail breast (wingless and
skinless)



PL109 - g. 16
Quail legs



PL111
Fresh quail eggs

Guinea fowl



FA001 - kg. 1,5
Whole Guinea Fowl



FA002 - g. 700
Boneless Guinea Fowl



FA003 - g. 300
Guinea Fowl breast (wingless)



FA007 - g. 300
French Guinea Fowl fillet
(wingless)



FA012 - g. 200
Supreme Guinea Fowl (half breast
with wing)



FA005 - g. 170 - 190
Guinea Fowl leg

Rabbit



CO001 - kg. 1,5
Whole rabbit



CO002 - g. 800 - 900
Boneless rabbit



CO004 - g. 900
Traditional farm-raised rabbit
boneless



CO003 - g. 500
Rabbit loin



CO015 - g. 250 - 300
Boneless rabbit loin



CO005 - g. 80
Rabbit fillet



CO025 - g. 50
Rabbit fillet - short cut



CO006 - g. 250
Rabbit leg



CO020 - g. 140 - 160
Boneless rabbit leg